

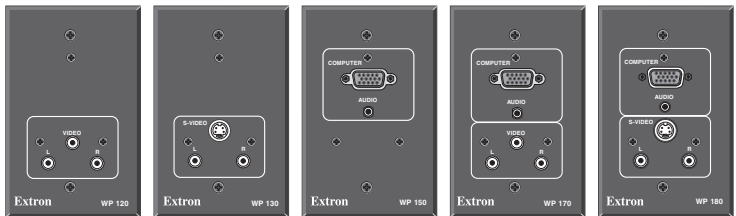
Installation Guide

68-606-02 **Rev. A**
02 05

The Extron Wallplates are wall- or furniture-mountable accessories that provide a convenient way to make pass-through connections from audio and video source devices.

- WP 120, WP 130, WP 150, WP 170, and WP 180 fit into a standard U.S. one-gang wall box.
- WP 120 AUS, WP 150 AUS, and WP 170 AUS fit into a standard Australian wall box.

For step-by-step installation instructions and further details, see the *Wallplates Installation Manual*, which is available at www.extron.com.



CAUTION

Installation and service must be performed by authorized personnel only. These units must be installed with accordance with the National Electrical Code and with local electrical codes. Use cable clamps to hold the cables in place for strain relief. Trim back/insulate exposed cable shields with heat shrink to reduce the chance of short circuits.

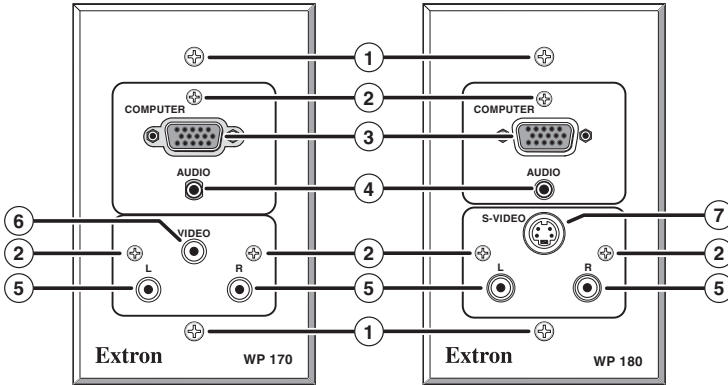
NOTE

These wallplates are passive devices and do not provide buffering or other processing.

Installation

Front Panel Features and Cabling

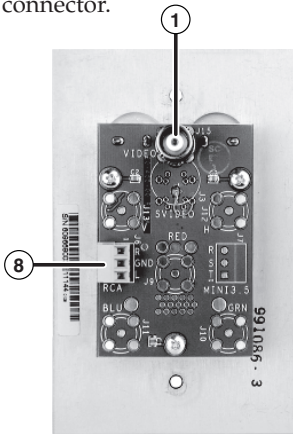
The WP 170 and WP 180 shown below together include all the front panel connectors that are available in the WP wallplates.



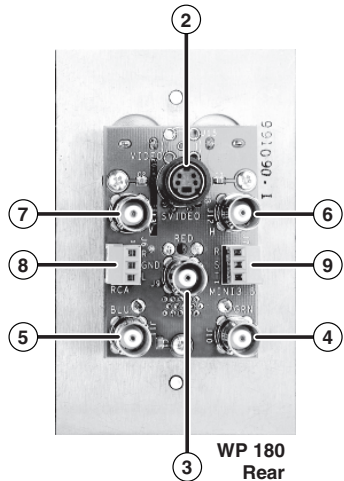
- ① **Mounting screws** — These fasten the wallplate onto the electrical wall box, mud rings, or furniture.
- ② **Circuit board attachment screws** (all models) — These three small screws fasten the circuit board to the faceplate.
NOTE *Do not remove these screws while the wallplate is attached to the wall or furniture or the circuit board may fall into the wall or furniture.*
- ③ **Computer video input** (WP 150, WP 150 AUS, WP 170, WP 170 AUS, WP 180) — Attach an RGB computer video source here. Signals are routed out rear panel female BNC connectors.
- ④ **Computer Audio input** (WP 150, WP 150 AUS, WP 170, WP 170 AUS, WP 180) — Connect computer audio input here. The signal is routed out the rear panel mini 3.5 mm direct insertion captive screw connector.
- ⑤ **RCA (L and R) audio input** (WP 120, WP 120 AUS, WP 130, WP 170, WP 170 AUS, WP 180) — Connect an unbalanced stereo audio device via these connectors. The signal is routed out the rear panel RCA direct insertion captive screw connector.
- ⑥ **Composite video (Video) input** (WP 120, WP 120 AUS, WP 170, WP 170 AUS) — A composite video signal input here is routed to the rear panel Video BNC connector.
- ⑦ **S-video input** (WP 130, WP 180) — An S-video signal input here is routed to the rear panel S-video connector.

Rear Panel Connectors and Cabling

The WP wallplates share a similar circuit board design: each type of connector will be in the same place on each model, but the quantity and selection of connectors differs from model to model. The cabling and wiring instructions here apply to any wallplate with a particular connector.



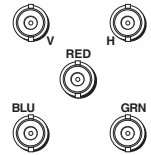
WP 120
Rear



WP 180
Rear

- ① **Composite video (Video) output** — A female BNC connector.
- ② **S-video (SVideo) output** — A 4-pin mini DIN connector for S-video output.

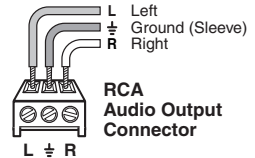
Computer video output: ③ = Red, ④ = Green, ⑤ = Blue, ⑥ = horizontal sync (H), ⑦ = vertical sync (V)
— Connect coaxial cables to these female BNC connectors for the appropriate RGB signal format.



RGBHV

- ⑧ **RCA audio output** — Unbalanced stereo audio from the front panel RCA connectors is output here. Wire this direct insertion captive screw connector as shown at right.

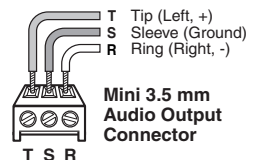
NOTE *The printing on the circuit board may or may not match the wiring pattern.*



RCA
Audio Output
Connector

- ⑨ **Mini 3.5 computer audio output** — Unbalanced stereo audio from the front panel mini stereo jack is output here. Wire this connector as shown at right.

CAUTION *Connect the sleeve to ground (Gnd). Connecting the sleeve to a negative (-) terminal may damage audio circuits in the audio device, switcher, or projector.*

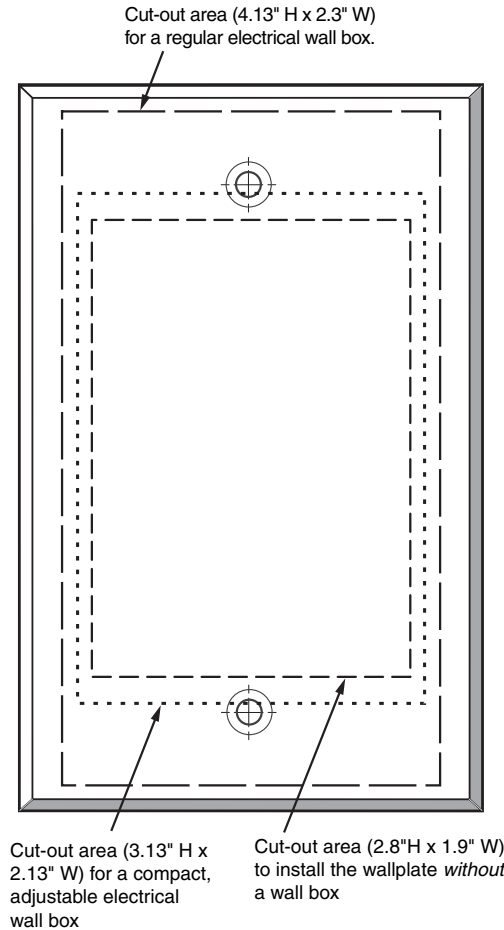


Mini 3.5 mm
Audio Output
Connector

Template

Use the dimensions in the cut-out template below as a guide for cutting a hole in the wall or furniture. **The template is not 100% size.** See the full WP Series Installation Manual for a template for AUS models

WP Series (1-gang) cut-out template



Extron Electronics, USA
1230 South Lewis Street
Anaheim, CA 92805
USA
714.491.1500
Fax 714.491.1517

Extron Electronics, Europe
Beeldschermweg 6C
3821 AH Amersfoort
The Netherlands
+31.33.453.4040
Fax +31.33.453.4050

Extron Electronics, Asia
135 Joo Seng Road, #04-01
PM Industrial Building
Singapore 368363
+65.6383.4400
Fax +65.6383.4664

Extron Electronics, Japan
Kyodo Building
16 Ichibansho
Chiyoda-ku, Tokyo 102-0082 Japan
+81.3.3511.7655
Fax +81.3.3511.7656