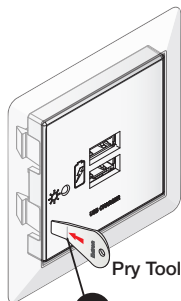


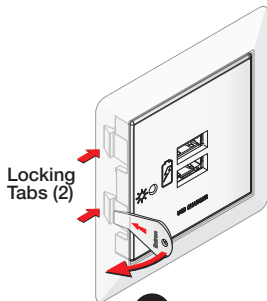
FLEX55

Module Removal Guide



Pry Tool

- 1** Insert pry tool to line.



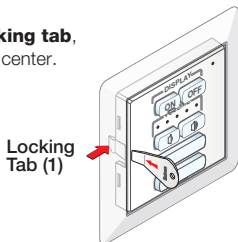
Locking
Tabs (2)

- 2** Pull the pry tool to the left to unhook each locking tab from the mounting bracket.



- 3** Remove the module.

For modules with one locking tab,
unhook the tab located at the center.



Locking
Tab (1)

NOTE: Some modules are difficult to remove once installed. Make sure the wiring is correct before snapping in each module.

68-3031-50 Rev. A
08 16

© 2016 Extron Electronics. All rights reserved.

www.extron.com