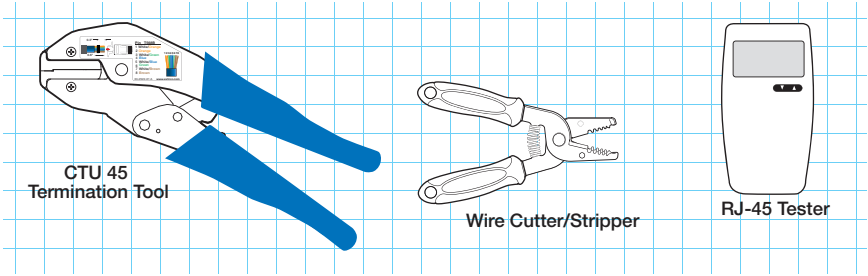


## XTP DTP 24 Plug Kit for XTP DTP 24 Cable with CTU 45

The Extron Shielded XTP DTP 24 RJ-45 Plug kit terminates XTP DTP 24 shielded twisted pair cable. The plug can accommodate 22 AWG to 28 AWG solid or stranded wires. The insulated conductor diameter must be in the range of 0.044 to 0.048 inch.

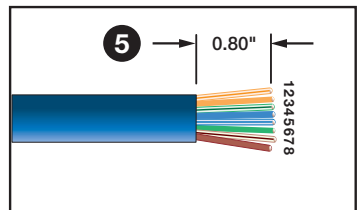
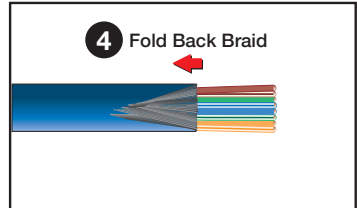
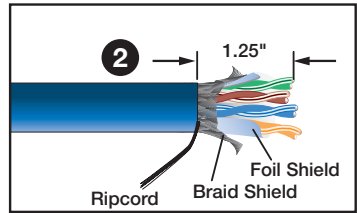
The following tools are required to complete a fully shielded cable assembly:



This guide provides instructions for completing a fully shielded cable assembly. To terminate XTP DTP 24 shielded twisted pair cable, follow these steps:

- Optional: Slide a strain relief or heat shrink over the cable. The strain relief and heat shrink are not included.
- Make a circular score around the cable jacket at approximately 1.25 inches (31.8 mm) from the end of the cable. Use the rip cord to remove the jacket, then cut the rip cord.
- Remove the foil and mylar shielding (if present) from the end of the cable.
- Turn the cable over and fold and flatten the braid against the bottom of the cable jacket for grounding purposes (see note in step 11).

**NOTE:** In the figure to the right, the cable is viewed from beneath, so the wires are in reverse order.

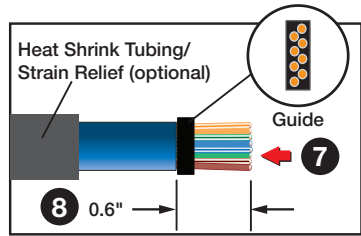


- Separate and untwist the four exposed twisted pair wires and trim (but do not strip) the wires to 0.8 inch (20.3 mm).
- Arrange and lay flat the eight wires in the correct order to comply with the TIA/EIA 568B wiring standard (see the table at right).

**NOTE:** Plenum cable does not have a stripe on the white conductor.

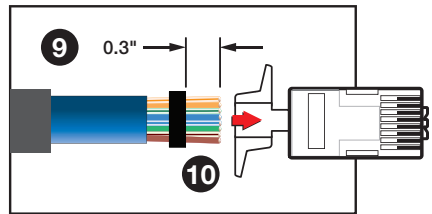
T568B Wiring	
Pin	T568B Wire Colors
1	White/Orange
2	Orange
3	White/Green
4	Blue
5	White/Blue
6	Green
7	White/Brown
8	Brown

7. Feed the individual wires, in the correct order (see table on the previous page), through the open front face of the plastic guide and out through the individual holes at the other side. The rear of the guide should be seated against the end of the jacket and braid.
8. Cut the wires to 0.6 inch (15.2 mm) as shown at right.



9. Push the guide up, leaving 0.3 inch of the wires exposed above the guide (see image at right).
10. Insert the guide and wires into the RJ-45 connector, making sure the wires pass the crimping teeth of the connector.

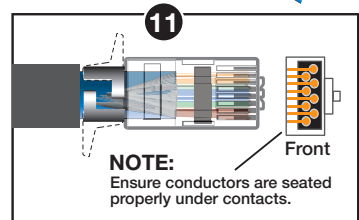
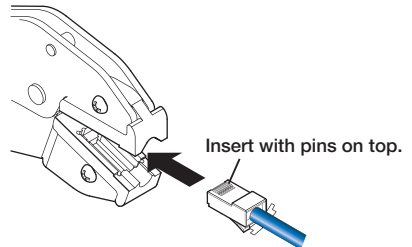
**NOTE:** Ensure the wires are in the correct order (see table on the previous page) and the bottom of the connector is next to the braid shield that was folded under the cable in step 4.



11. Insert the connector into the termination tool and crimp it to secure the connector to the cable. Be sure to insert the connector properly, with the pins on top (see image at right).

**NOTES:**

- The CTU 45 tool crimps the front of the connector, the jacket, and the strain relief.
- To ensure correct grounding throughout the cable, the braid shield (folded back in step 4) must make contact with the shielded RJ-45 connector on both ends of the cable.



12. If a strain relief is present, slide it forward to cover the cable and the first 0.4 inch (10.2 mm) of the RJ-45 connector.
13. Test both ends of the cable for conductivity.

**NOTE:** If there is a need to re-terminate the cable, cut off the terminated end of the cable and repeat steps 2 through 12.