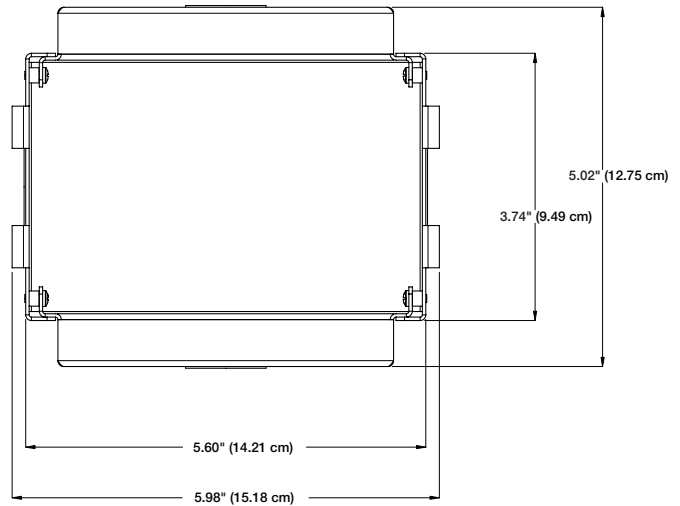
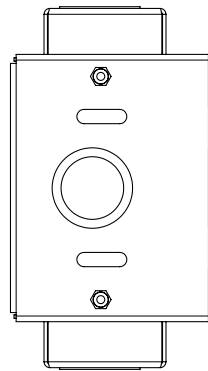
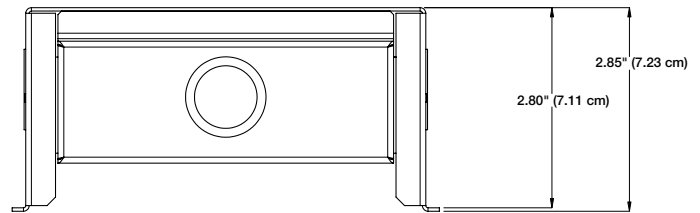


# Specifications

## BB 1

### General

Mounting.....	In-wall mounting
Material .....	Steel
Color/finish .....	Unpainted, clear zinc coated for corrosion prevention
Enclosure dimensions .....	5.02" H x 5.98" W x 2.80" D 12.75 cm H x 15.18 cm W x 7.11 cm D



Surface cutout.....	3.74" H x 5.60" W (9.49 cm H x 14.21 cm W)
Conduit knockouts.....	4 per unit, 1/2" and 3/4" diameter
Product weight.....	1 lb (0.45 kg)
Shipping weight.....	2 lbs (1 kg)
Vibration .....	ISTA 1A in carton (International Safe Transit Association)
Regulatory compliance	
Safety .....	CE, c-UL, UL
Environmental.....	Complies with the appropriate requirements of RoHS, WEEE
Warranty.....	3 years parts and labor

**NOTE:** Specifications are subject to change without notice.

8.0-021814-D1

