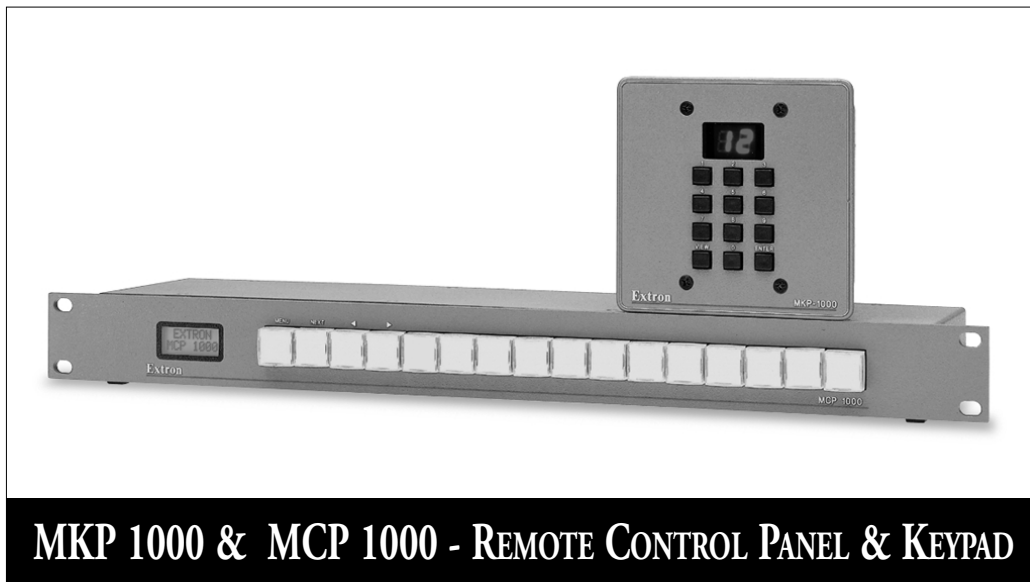


Extron Electronics

INTERFACING, SWITCHING AND DISTRIBUTION



Remote switching control

Works with SW MX, System or Matrix Switchers

One-button crosspoint operation (MCP 1000 only)

One-button operation per preset (MCP 1000 only)

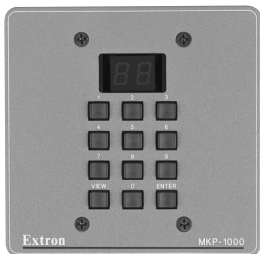
Simple set-up through menus

RS-232 SIS™ control (MCP 1000 Master only)

Mounting brackets



MKP 1000 APPLICATIONS



The MKP 1000 is a remote keypad that can work in conjunction with a MCP 1000 or directly control a Matrix 6400 or 3200 Series Switcher from a remote location or room. Each keypad can be programmed to control the switching of certain inputs from a matrix switching system to a specific output associated with that keypad. The keypad can be used to select different inputs, check the last selected input, or activate presets.

The MKP 1000 can be configured for the following modes: room preset mode (select from 10 possible room presets), output mode (tie any input to a dedicated output), and global preset mode (select from 32 global presets). For easy wiring and set-up, Extron's Comm-Link cable provides communications and power from a Matrix 3200/6400 switcher or MCP 1000. The MKP 1000 is mounted in a standard electrical wall box with a two-gang wall plate, which may be installed in a wall, conference table, or podium.

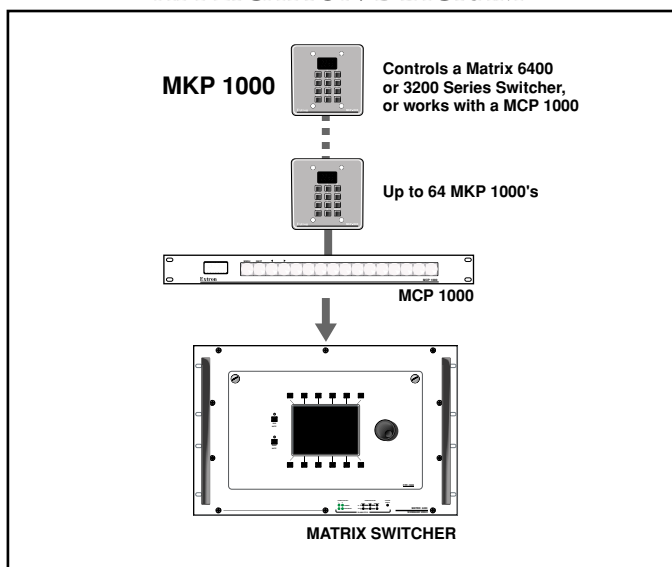
FEATURES

- **Compatibility** – For the Matrix 3200/6400 Series Switchers, the MKP 1000 works either independently or in conjunction with the MCP 1000. The MKP 1000 works in conjunction with the MCP 1000 for Extron SW MX, System, and Matrix Switchers.
- **Modes** – The MKP 1000 operates in three modes: room preset mode (choose from 10 possible room presets), output mode (tie one specific input to a dedicated output), and global preset mode (choose from 32 global presets).
- **Enclosure** – The MKP 1000 is mounted in a standard electrical wall box with a two-gang wall plate.
- **Power supply** – The MKP 1000 draws power from a Matrix 3200/6400 switcher or a MCP 1000.

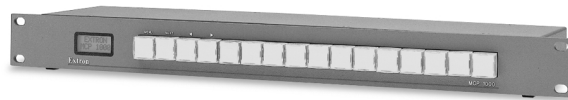
PART NUMBERS

| | |
|------------------------|-----------|
| MKP 1000 (Grey) | 60-239-01 |
| MKP 1000 (Black)..... | 60-239-02 |
| MKP 1000 (White) | 60-239-03 |

APPLICATION DIAGRAM



MCP 1000 APPLICATIONS



The MCP 1000 is a remote control panel that controls any Extron SW MX, System, or Matrix Switcher. The MCP 1000 provides a user with remote control capabilities for an Extron product with an RS-232 Simple Instruction Set™ (SIS) port or Comm-Link communications port. The MCP 1000 features three modes of remote control operation: one-button switching for a particular output, global presets, and room presets (available with Matrix 3200/6400 Switchers only).

The MCP 1000 is available as a Master (M) with RS-232 capabilities or Slave (S) with no RS-232 capabilities. Both units provide MKP 1000/Comm-Link remote communication ports for Comm-Link communications to the Matrix 3200/6400 Series. The MCP 1000M unit offers an RS-232 port for communication with any Extron SIS-compatible switcher. An RS-232 loop-thru port allows for third-party control of the switcher when the MCP 1000M is connected by RS-232. The MCP 1000S can communicate via Extron's Comm-Link protocol to any MCP 1000 or Matrix with Comm-Link ports.

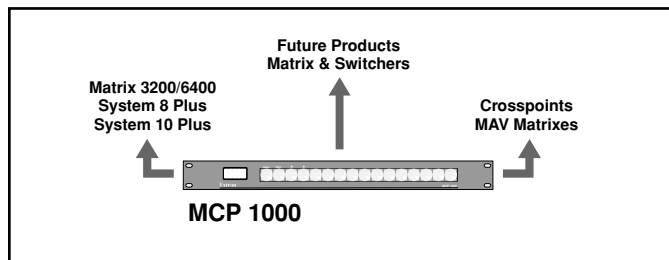
FEATURES

- **Compatibility** – The MCP 1000 works with Extron SW MX, System, and Matrix Switchers and is compatible with up to 64 MCP 1000 and MKP 1000 units.
- **Modes** – The MCP 1000 operates in these modes of operation: one-button switching for a particular output, global presets, and room presets (Matrix 3200/6400 only).
- **Front panel buttons** – The MCP 1000 features large positive-touch illuminated pushbuttons which can be labeled with text or graphics.
- **Enclosure** – The rack-mountable MCP 1000 comes in a compact, 1U enclosure with a 5" depth.
- **Mounting options** – The MCP 1000 offers mounting brackets suitable for three options: a standard 19" rack, mounting under a desk, or mounting through a desk.
- **Power supply** – The MCP 1000 includes a 100-240VAC, 50/60 Hz, internal power supply.

PART NUMBERS

| | |
|-----------------------------------|-----------|
| MCP 1000M (Master)..... | 60-298-01 |
| MCP 1000S (Slave) | 60-298-02 |
| Red Buttons (8) | 70-111-01 |
| Green Buttons (8) | 70-111-02 |
| Yellow Buttons (8) | 70-111-03 |
| Blue Buttons (8) | 70-111-04 |
| Assorted Buttons (8) | 70-111-05 |
| Under the Desk Mounting kit | 70-077-01 |

APPLICATION DIAGRAM



EXTRON ELECTRONICS/RGB SYSTEMS, INC.
1230 South Lewis Street, Anaheim, CA 92805
800.633.9876 714.491.1500 FAX 714.491.1517
U.S.A.

EXTRON ELECTRONICS, EUROPE
Beeldschermweg 6C, 3821 AH Amersfoort
+31.33.453.4040 FAX +31.33.453.4050
The Netherlands

EXTRON ELECTRONICS, ASIA
41B Kreta Ayer Road, Singapore 089003
+65.226.0015 FAX +65.226.0019
Singapore

EXTRON ELECTRONIC INFORMATION
EXTRONWEB™: www.extron.com
EXTRONFAX™: 714.491.0192
24-hour access—worldwide!