

DataViewer

ENHANCED TERMINAL EMULATION SOFTWARE

- Available for free
- Facilitates analysis and troubleshooting of device protocols
- Enables automation of repetitive communications tasks
- Accelerates productivity through determination of device timing issues
- Create log files for review and recordkeeping
- Save log files to HTML or text
- Timestamp queries for detailed analysis
- Configure up to 20 shortcut keys
- Text colors and fonts are user-definable to allow for easier reading of transmit and receive data



DataViewer is a next-generation device communication analysis tool that allows technical non-programmers to troubleshoot device protocols and determine device timing. DataViewer is an essential application for improving device communication in a network environment.



Extron® Electronics

www.extron.com

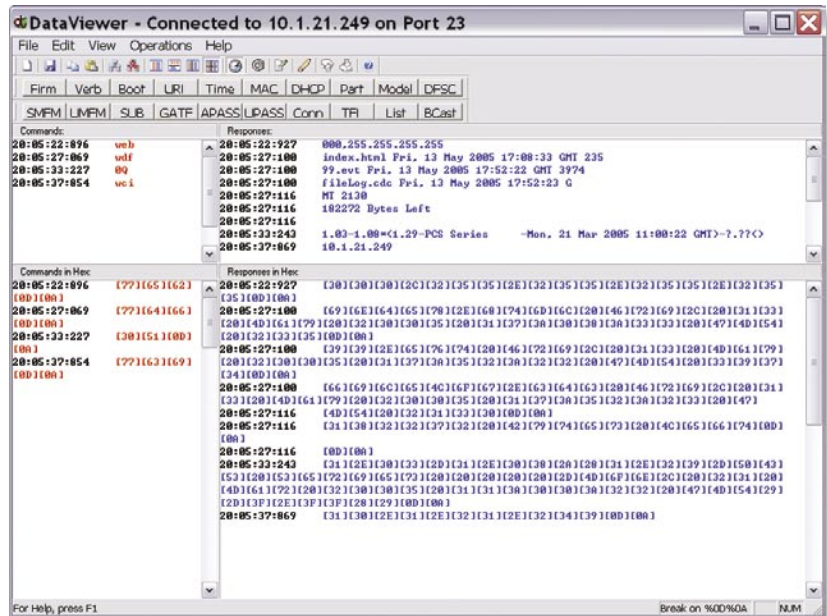
DESCRIPTION

Extron **DataViewer** software is a powerful terminal emulation program that facilitates analysis of RS-232 and TCP/IP communication with Extron devices. The software allows users to send commands to a device and view the device's responses in ASCII or hexadecimal format. Command and response logs can be saved in text or HTML format.

Connections are made quickly and easily with the DataViewer communication module. It provides a list of all available configured IP Link® devices on the network through a single, easy-to-use menu.

The data display can be configured in several ways for improved analysis of data communication. Text colors and fonts are user-definable to easily differentiate between commands and responses. Four different screen view options are available for viewing commands and responses in the most effective configurations and formats.

With the DataViewer Control Toolbar and Shift Toolbar, you can customize up to 20 shortcut keys. These can be used to automate repetitive communications tasks, such as copy, paste, repeat last command, apply time stamp, etc. DataViewer is ideal for troubleshooting device protocols and determining device timing.



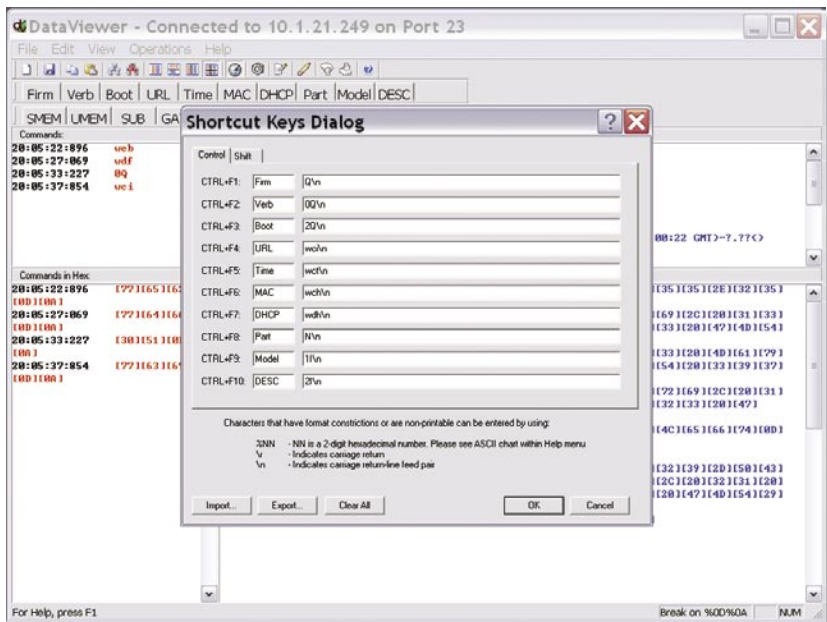
The 4-split view is one of four different ways of displaying command and response communication data.

FEATURES

- Available for free
- Facilitates analysis and troubleshooting of device protocols
- Enables automation of repetitive communications tasks
- Accelerates productivity through determination of device timing issues
- Create log files for review and recordkeeping
- Save log files to HTML or text
- Timestamp queries for detailed analysis
- Configure up to 20 shortcut keys
- Text colors and fonts are user-definable to allow for easier reading of transmit and receive data

SYSTEM REQUIREMENTS

- Intel® Pentium® III processor or later with at least a 1 GHz clock speed
- Microsoft® Windows NT, Windows 2000, Windows XP, or later operating system
- 256 MB of RAM
- 5 MB of hard disk space
- A network connection with a minimum data transfer rate of 10 Mbps



The Shortcut Keys Dialog box makes it easy to set up shortcut keys.



Extron Electronics, USA
1230 South Lewis Street
Anaheim, CA 92805
800.633.9876 714.491.1500
FAX 714.491.1517

Extron Electronics, Europe
Beeldschermweg 6C
3821 AH Amersfoort, The Netherlands
+800.3987.6673 +31.33.453.4040
FAX +31.33.453.4050

Extron Electronics, Asia
135 Joo Seng Rd. #04-01
PM Industrial Bldg., Singapore 368363
+800.7339.8766 +65.6383.4400
FAX +65.6383.4664

Extron Electronics, Japan
Kyodo Building, 16 Ichibancho
Chiyoda-ku, Tokyo 102-0082
Japan
+81.3.3511.7655 FAX +81.3.3511.7656