



## Leander ISD Uses GlobalViewer Enterprise to Support Large Number of Classroom AV Systems

“I’m not sure how I would support so many classrooms without the extensive monitoring, troubleshooting, and reporting capabilities of GlobalViewer Enterprise.”

**Benny Bello**  
Leander ISD  
AV/Network Cabling and  
Infrastructure Technician

Leander Independent School District encompasses more than 200 square miles and is one of the fastest growing school districts in Texas. The district serves approximately 32,000 students on 37 campuses that include technology-enabled classrooms. Managing the audiovisual technologies in these classrooms would be a sizable task for almost any organization. But, Benny Bello, the district's only full-time AV/Network Cabling and Infrastructure Technician, handles it all with the assistance of Extron PoleVault Systems and GlobalViewer Enterprise software.

### Complete Competitive Review

After an extensive review of the many classroom audiovisual systems available, the district standardized on Extron PoleVault Systems for their middle and high schools. In addition to Extron, district officials evaluated solutions from Crestron, AMX, and others.

The final decision to choose PoleVault Systems was influenced by several factors related to support. Some examples noted by district officials include: other suppliers' warranties are three years, while Extron's is five years; service contracts were required by other manufacturers and integrators, but Extron did not require one; Extron allows the district to stock replacement parts for quick turnaround, while competitors do not.

“Extron support was a big advantage over the competition,” says Bello. “From warranties and service to spares and easy system configuration, they really took the time to satisfy the unique needs of our district.”



**Extron® Electronics**  
INTERFACING, SWITCHING AND CONTROL

# Leander ISD Uses GlobalViewer Enterprise to Support Large Number of Classroom AV Systems

However, the chief factor leading to the district's decision to choose Extron systems was GlobalViewer Enterprise software, or GVE, which enables the district to support hundreds of geographically dispersed classrooms from a single, centralized help desk.

## Monitoring, Troubleshooting, and Reporting

Bello is the only full-time AV support person in the district, though he has some part-time help from another network cabling technician. Even in a growing district with a wide geographic region to support, he doesn't see this situation changing in the near future. "I like to call Extron GlobalViewer Enterprise software my Virtual Support Person," says Bello. "I'm not sure how I would support so many classrooms without the extensive monitoring, troubleshooting, and reporting capabilities of GlobalViewer Enterprise."

GlobalViewer Enterprise software enables Bello to perform several key support tasks right from the help desk, including:

**Connectivity troubleshooting:** With one look at the helpdesk screen, he can detect when device communication is lost. In most cases, it is simply a wiring issue that can be corrected before a teacher notices anything is wrong. This functionality can also help in the event of a theft. When a projector was stolen recently, Bello was able to quickly provide school security officials with the serial number of the stolen device, along with the exact time that communication was lost. Security was able to narrow down the list of individuals in the room at the time of the theft.

**Lamp hour tracking:** Bello uses lamp hour tracking as the basis for his lamp and projector preventative maintenance and budget forecasting. GVE can be configured to send email alerts when lamps need to be replaced. This allows Bello to efficiently schedule replacements as opposed to having a lamp burn out in a room an hour away from

his office. Accurate lamp hour data from GVE enables the district to precisely forecast spending for lamps and projectors.

**Scheduled shut off:** Through GVE, Bello schedules all projectors to shut down at 5:30 pm, 9:00 pm, and 12:00 am. This prevents projectors from being left on overnight or over the weekend, saving on energy costs and extending lamp life.

**Input monitoring:** Bello also monitors which video inputs, computer or composite, are used in every classroom. This allows him to ensure that each campus stocks only the quantity of composite source devices, such as DVD players, that it requires, which eliminates unnecessary expenditures on excess inventories.

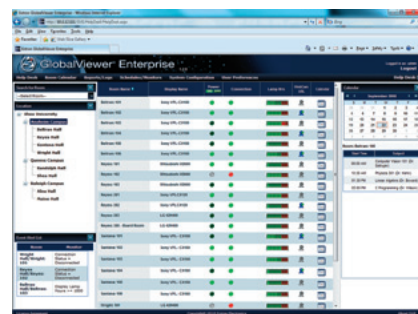
## Teachers Rely on the Technology

Leander Independent School District has installed PoleVault Systems in over 1,200 high school and middle school classrooms, with plans for many more. The typical classroom is outfitted with a two-input system, featuring a ceiling mounted projector, speakers, a wall-mounted controller, one computer input, and one composite video input. The computer is the primary video source for the projector. Teachers can also check out a DVD player or connect their own iPad, iPad Touch, or other device through the composite input.

Most teachers have converted their lessons to computer delivery, and have come to take it for granted that the system will work when they need it. "Some teachers might not know what to do if the system didn't work during class time," says Bello. Through effective problem resolution and regular preventative maintenance, GlobalViewer Enterprise software's unique support capabilities help him keep things running smoothly for everyone, even from a distance.



**PVS 200**  
Two Input System



**GlobalViewer® Enterprise**  
Server-Based AV Resource Management Software

## Worldwide Sales Offices

Anaheim, CA • Raleigh, NC • Dallas, TX • Washington, DC • London • Paris • Amersfoort, NL  
Frankfurt • Dubai • Singapore • Seoul • Shanghai • Beijing • Tokyo • Bangalore

**UNITED STATES**  
+800.633.9876  
Inside USA/Canada

**EUROPE**  
+800.3987.6673  
Inside Europe

**ASIA**  
+800.7339.8766  
Inside Asia

**MIDDLE EAST**  
+971.4.2991800