

How to Deploy Instant Alert with Emergency Video Monitoring

The Instant Alert function of our VoiceLift® Microphone, combined with the power of a PoleVault®, WallVault®, or PlenumVault® classroom AV system and your network, gives instructors a quick and easy way to discreetly signal for assistance in the event of an emergency in the classroom. Simply press and hold both volume buttons on the VoiceLift Pendant Microphone for three seconds. This closes a relay, which instructs an Ethernet-enabled MediaLink® controller to notify school administration officials or campus authorities via e-mail or text message. E-mails can be sent to multiple destinations, including cell phones and other wireless devices.

In addition to text indicating that assistance is needed, Instant Alert and the Classroom AV System can be integrated with an IP camera system to provide both visual and audio feedback from the classroom. This extra layer of security allows officials to monitor to activities in the classroom when and Instant Alert is triggered, allowing them to determine the best course of action such as summoning police or medical personnel, or starting lock down procedures.

To enable this capability, a hyperlink to the IP address of the classroom camera is added to the Instant Alert e-mail message for that room. When an Instant Alert message is received, clicking the link in the e-mail will bring up a live feed of the room in your browser.

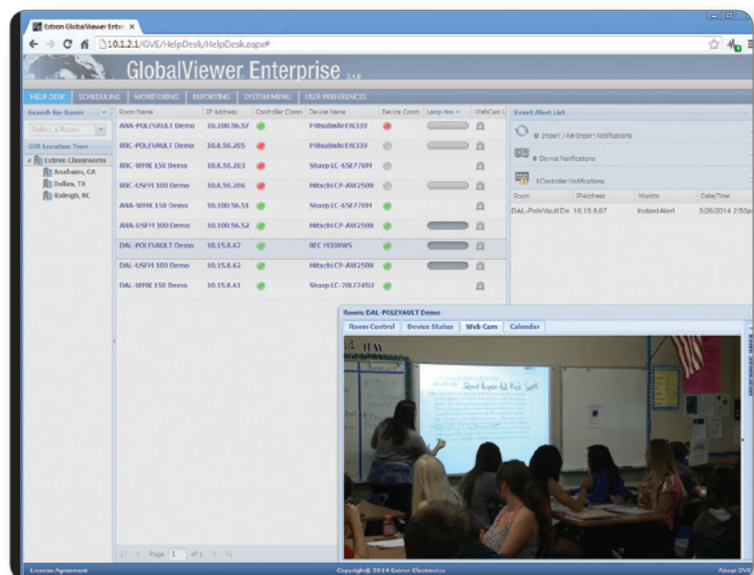
For those districts that use Extron GlobalViewer® Enterprise for remote management and control of their classroom AV systems, the video monitoring capabilities are more tightly integrated. An Instant Alert signal from the classroom will trigger an event alert on the GVE helpdesk screen with the location of the room. Simply click on the room name and select the Web cam view tab to see the live feed.

If GlobalViewer Campus Communication Suite has been deployed, the help desk operator may either make an announcement to the room that assistance is on the way, or initiate an intercom session for two-way communication with the instructor.

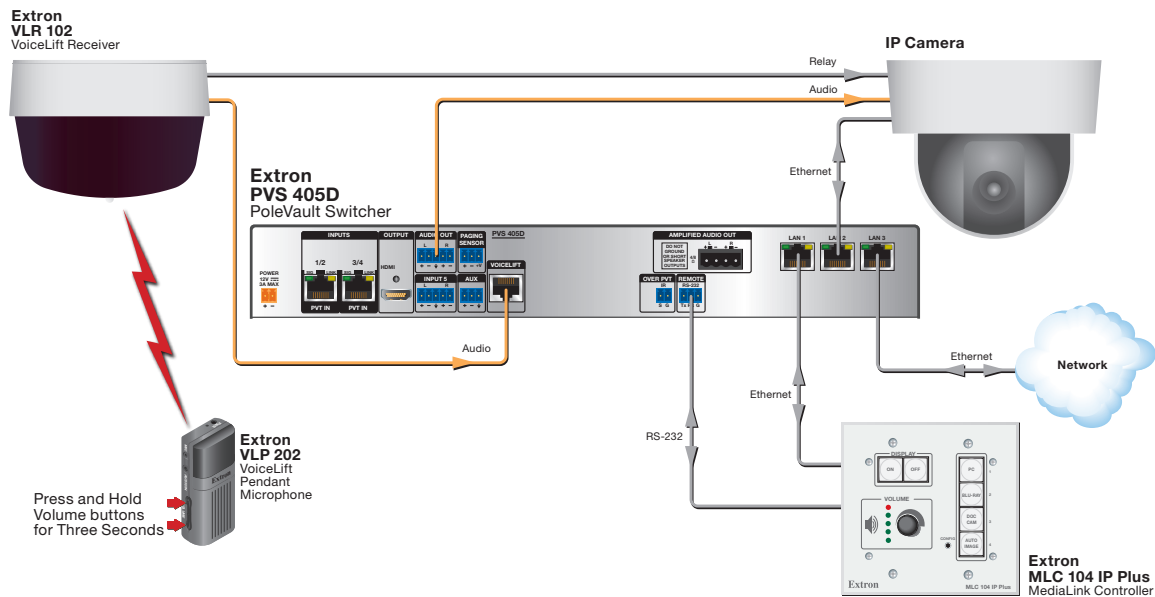
For further information on Extron security features, compatible IP cameras and other devices, or our complete Classroom AV Systems, contact your Extron Education Support Representative at 800.633.9876.



Press and hold volume buttons to activate Instant Alert



GlobalViewer Enterprise showing a live webcam feed from the classroom



This diagram shows basic integration between the VoiceLift Microphone, PoleVault® Digital switcher and an IP camera for delivering Instant Alert video monitoring. In this scenario, when Instant Alert is initiated by the VoiceLift Pendant Microphone, a relay instructs the camera to begin recording to local memory. Simultaneously, the MLC 104 IP Plus controller detects the Instant Alert message from the PoleVault Switcher and sends an e-mail and/or text message to one or more designated parties. This message contains the IP address of the network camera. Any computer on the network can open a browser with this address, and view a live feed from the camera.

There are a wide variety of IP surveillance cameras on the market and most will work for this type of application. Below are some suggested capabilities to look for when selecting a camera to ensure that the system delivers the highest possible level of performance.

Network - Camera should support 10BASE-T/100BASE-TX and offer a full complement of protocols such as IPv4/v6 and HTTP, allowing you to access the live video stream across campus, across the district, or from the internet.

Resolution - 800x600 is considered a basic resolution offering reasonable quality and a value price point. Higher resolutions such as 1280x800 or 1920x1080 provide much more detailed images and lend themselves towards lecture capture applications if that capability is desired.

Fixed, PTZ, Panoramic - A fixed camera has a single viewing direction once it is mounted. A PTZ camera provides remote pan, tilt and zoom functions, enabling wide area coverage and great detail when zooming in. Panoramic cameras provide a 360° field of view, ideal for applications that require wide area coverage in a single view.

Storage - Many cameras offer a memory slot for use with standard SD type memory cards. This feature is helpful if you plan on recording video for review or publication.

Alarm I/O - Many cameras feature alarm contact inputs and outputs. These I/O's are helpful for triggering events based on a condition in the room, such as to start recording when the teacher presses a button.

Audio - Some cameras offer an on-board microphone that provides a general sense of the audio activity in the room. Others offer a line input that can be integrated with the teacher's microphone for their first person account. This type of integration is also beneficial if the system may be used for lecture capture.